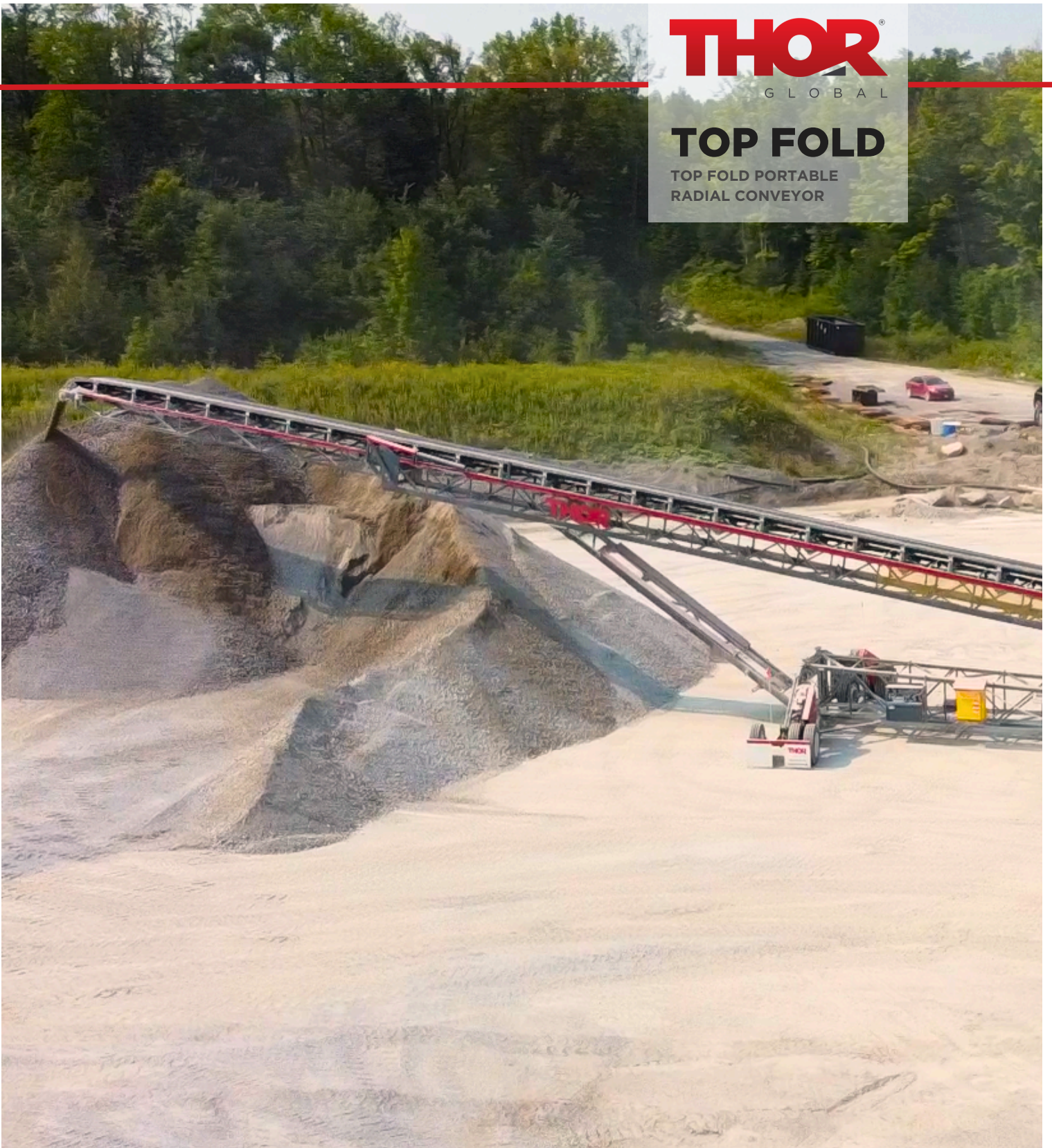


THOR[®]
GLOBAL

TOP FOLD

TOP FOLD PORTABLE
RADIAL CONVEYOR



**MOVE
MOUNTAINS.**

FEATURES

THE MIGHTY MOVER.

THE THOR TOPFOLD IS OUR TOP PREMIUM DUTY HIGHLY TRANSPORTABLE CONVEYOR
The Top Fold is designed for simple stockpiling coupled with easy transportation
available in both a swing and hammer option.



STANDARD FEATURES

- FLEXCO EZP1 PRIMARY SCRAPER WITH URETHANE BLADE & TENSIONER
- BELT SPLICE: VULCANIZED
- CONTACTORS: IEC
- GEAR REDUCERS: CLASS 2
- IDLERS: CEMA C
- SAFETY GUARDING
- STEEL: 60,000 PSI
- TAIL PULLEY KICKER BAR

OPTIONAL FEATURES

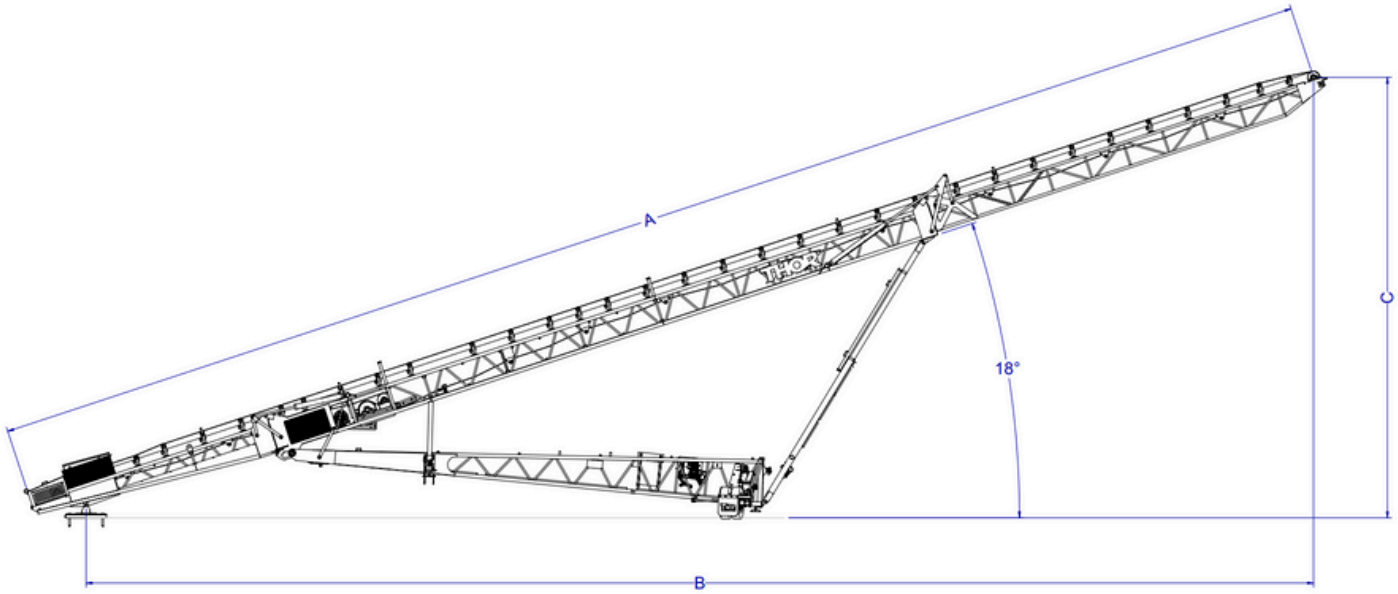
- ANCHOR PAD
- COLOUR: CUSTOM
- DUAL DRIVE
- GALVANIZING: HOT-DIP
- BELT SCALE
- HOPPER LINING
- IMPACT BED
- WIRELESS REMOTE CONTROL
- PROGRAM PACKAGE: ZERO SEG
- HYDRAULIC PUSH DOWN AXLE
- TOW HITCH
- TRANSPORT LANDING LEGS: HYDRAULIC
- WIRE REMOTE TOUCH SCREEN: Dual
- WIRELESS REMOTE CONTROL
- TRAINING: ONSITE
- THIRD AUXILIARY AXLE



Available in
Swing & Hammer
axle.



SPECIFICATIONS



ELEVATION DIMENSIONS

MODEL	A	B	C
TF80x36x800	80ft	73ft	28ft - 2in
TF110x36x800	110ft	97ft - 4in	38ft - 1in
TF130x36x800	130ft	120ft - 11in	43ft - 5in
TF150x36x800	150ft	140ft - 5in	50ft - 11in

CONVEYOR DIMENSIONS

MODEL - SINGLE FOLD	BELT WIDTH	LENGTH	CAPACITY
TF80x36-0800	36in	80ft	800 STPH
TF110x36-0800	36in	110ft	800 STPH

CONVEYOR DIMENSIONS

MODEL - DUAL FOLD	BELT WIDTH	LENGTH	CAPACITY
TF130x36-0800	36in	130ft	800 STPH
TF150x36-0800	36in	150ft	800 STPH

SPECIFICATIONS

STOCKPILE CAPACITIES

MODEL	BELT WIDTH	45°	90°	180°	270°	For Each Additional 1°
TF80x36x800	36 in	90,969 ft ³ 4,543 T	146,967 ft ³ 7,340 T	258,963 ft ³ 12,933 T	370,960 ft ³ 18,527 T	1,244 ft ³ 62 T
TF110x36x800	36 in	237,388 ft ³ 11,869 T	380,567 ft ³ 19,028 T	666,927 ft ³ 33,346 T	953,287 ft ³ 47,664 T	3,182 ft ³ 159 T
TF130x36x800	36 in	353,849 ft ³ 17,693 T	576,110 ft ³ 28,806 T	1,020,632 ft ³ 51,032 T	1,465,154 ft ³ 73,258 T	4,939 ft ³ 247 T
TF150x36x800	36 in	549,280 ft ³ 27,464 T	896,508 ft ³ 44,825 T	1,590,964 ft ³ 79,548 T	2,285,420 ft ³ 114,271 T	7,716 ft ³ 385 T

STOCKPILE DIMENSIONS

MODEL	A	B	C	D	E	F	G
TF80x36x800	221ft - 11in	177ft - 8in	128ft - 7in	76ft - 7in	92ft - 11in	146ft - 4in	199ft - 9in
TF110x36x800	298ft - 1in	239ft - 7in	174ft - 10in	106ft - 1in	127ft - 9in	198ft - 3ft	268ft - 10in
TF130x36x800	358ft	285ft - 5in	205ft	119ft - 6in	146ft - 5in	234ft - 1in	321ft - 8in
TF150x36x800	418ft - 0in	332ft - 9in	238ft - 5in	138ft - 1in	169ft - 8in	272ft - 6in	375ft - 5in

